

Hillel at the University of Rochester

► Hillel at the University of Rochester is committed to enriching the lives of its nearly 1,000 Jewish students—nearly 20 percent of the undergraduate population—so that they may enrich the Jewish people and the world. It envisions a world where every student is inspired to make an enduring commitment to Jewish life, learning, and Israel.

Hillel at Rochester provides students opportunities to explore their faith, connect with others, and participate in service activities. It also offers programs that foster social relationships and spiritual enrichment and enable personal and communal exploration of Jewish religion, culture, values, traditions, and scholarship.

History

Rochester's Hillel community was previously a member of the Hillel of Rochester Area Colleges, supported by the Jewish Federation of Greater Rochester. Hillel at the University of Rochester was formed



Hillel International ranks the University of Rochester in the top 60 U.S. schools for Jewish population.

in 2013. It is focused on providing the University's Jewish students greater opportunities for programming and enrichment. It also strives to build a strong Jewish community at Rochester. Hillel at Rochester is now supported by a board of directors that is made up of alumni, parents, and friends of the University.

Areas of Focus

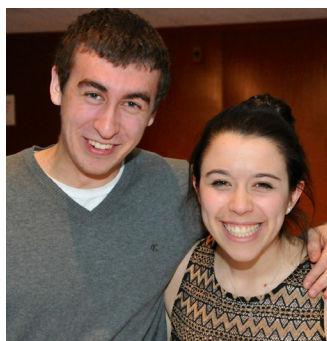
Hillel at Rochester is focused on building leaders; engaging students in Jewish life; strengthening connections with the University, the Rochester community, and Israel; and partnering with the University to enrich Jewish life on campus.



“Hillel at Rochester provides a community that is hard to find elsewhere on campus. There is a feeling of support and family here, both among the students and from the staff.”

Sarah Kieval '15

past president of Hillel at Rochester's student executive board



Building Leadership

Hillel at Rochester has launched Hillel International’s successful peer network engagement internship program here for the first time ever. The program mobilizes and builds vibrant networks of Jewish students on campus to increase both the breadth and depth of their overall engagement in Jewish life. In addition, as organized micro-communities of Jewish students begin to develop here, students will start creating programs that appeal to them. They will also explore essential questions about their Jewish faith, which will help further facilitate organizational transformation.

Strengthening Our Communities

Hillel at Rochester seeks to enhance the use of Taglit-Birthright Israel as a Jewish educational tool. This program opens the door to a journey of self-discovery for many students. Hillel at Rochester’s role is to not only accompany them on Birthright but also to deepen connections with them upon their return.

In addition, the Rochester area has an established Jewish community and Hillel at Rochester is interested in increasing its

interface with synagogues, schools, the Federation, and other organizations. Through increased involvement, Hillel becomes part of the vibrant Rochester Jewish community.

Student Engagement

Hillel at Rochester aims to engage more students by inspiring creative and enduring connections to Jewish life. With the help of peer engagement interns and the rabbi here, Hillel welcomes students where they are, including in their dorms, at Wilson Commons, the Eastman School of Music, or in the Interfaith Chapel, and among groups who seek Judaic learning, cultural programming, and advocacy.

Hillel at Rochester is helping to build relationships and provides a support system on campus. For example, it offers worship opportunities during Shabbat and High Holidays. It also provides ways to explore Jewish and Israeli music and even offers a Jewish a cappella group, Rok Hakol.

Partnering with the University, Hillel at Rochester applauds the University’s efforts to support Jewish life and learning. The

University already offers a kosher dining option in Douglas Dining Hall and is working closely with Hillel to increase the range of offerings and their availability. The University also recently established the Center for Jewish Studies, which elevates research, scholarship, and educational options for those interested in Jewish studies.

How You Can Help

Hillel at Rochester is an independent organization and relies on the generosity of those who value its commitment to Jewish life on campus. Please consider supporting Hillel at Rochester’s general unrestricted annual fund. Or consider supporting specific programs such as High Holiday meals, Friday night dinners, peer engagement interns, and workshops.

All gifts—including one-time-only donations, endowments, and designated contributions from a membership in the George Eastman Circle, the University’s leadership annual giving society—help provide meaningful and joyful experiences for the University’s Jewish students.

www.rochesterhillel.org

For more information on giving opportunities, please contact **Irene Doktor**, Director of Development, the College (585) 275-9827, irene.doktor@rochester.edu